



REUNIÓN FUNDACIONAL  
DE LA RED DE PERSONAL AUXILIAR  
DE LA EDUCACIÓN Y LA CULTURA  
DE LA INTERNACIONAL  
DE SERVICIOS PÚBLICOS



Public Services International  
Internationale des Services Publics  
Internationale de Servicios Públicos  
Internationale der Öffentlichen Dienste  
Internationell Facklig Organisation för Offentliga Tjänster  
国際公務労連



**CONTUA**

Confederación de Trabajadores  
y Trabajadoras de las Universidades  
de las Américas.  
CONFEDERACIÓN



**APUBA**

Asociación del Personal de la Universidad de Buenos Aires

**Founding Meeting of Public Services International  
Education Support and Cultural Workers Network**

**18-19, November 2014**

**University of Buenos Aires, School of Law**

**Avenida Figueroa Alcorta 2263**

**Buenos Aires, Argentina**

**Co-Hosted by APUBA and CONTUA**

# OBJECTIVES OF THE MEETING

The affiliates of Public Services International represent hundreds of thousands of educational support and cultural workers throughout the world, many of whom work without job security, fair compensation and benefits, or recognition that their services are vital to ensuring high quality public education and culture for all citizens. The jobs of these workers are on the frontlines of the privatization and casualization struggle within the education and cultural sector, and many of these workers face challenges in pursuing their basic freedom to form a union and collectively bargain their terms and conditions of service.

# OBJECTIVES OF THE MEETING

PSI is convening the founding meeting of the PSI Education Support and Cultural Workers Network to establish a formal PSI structure to confront the challenges that these workers face throughout the world and in accordance with Resolution #33, approved at the PSI World Congress in Durban, South Africa in late 2012.

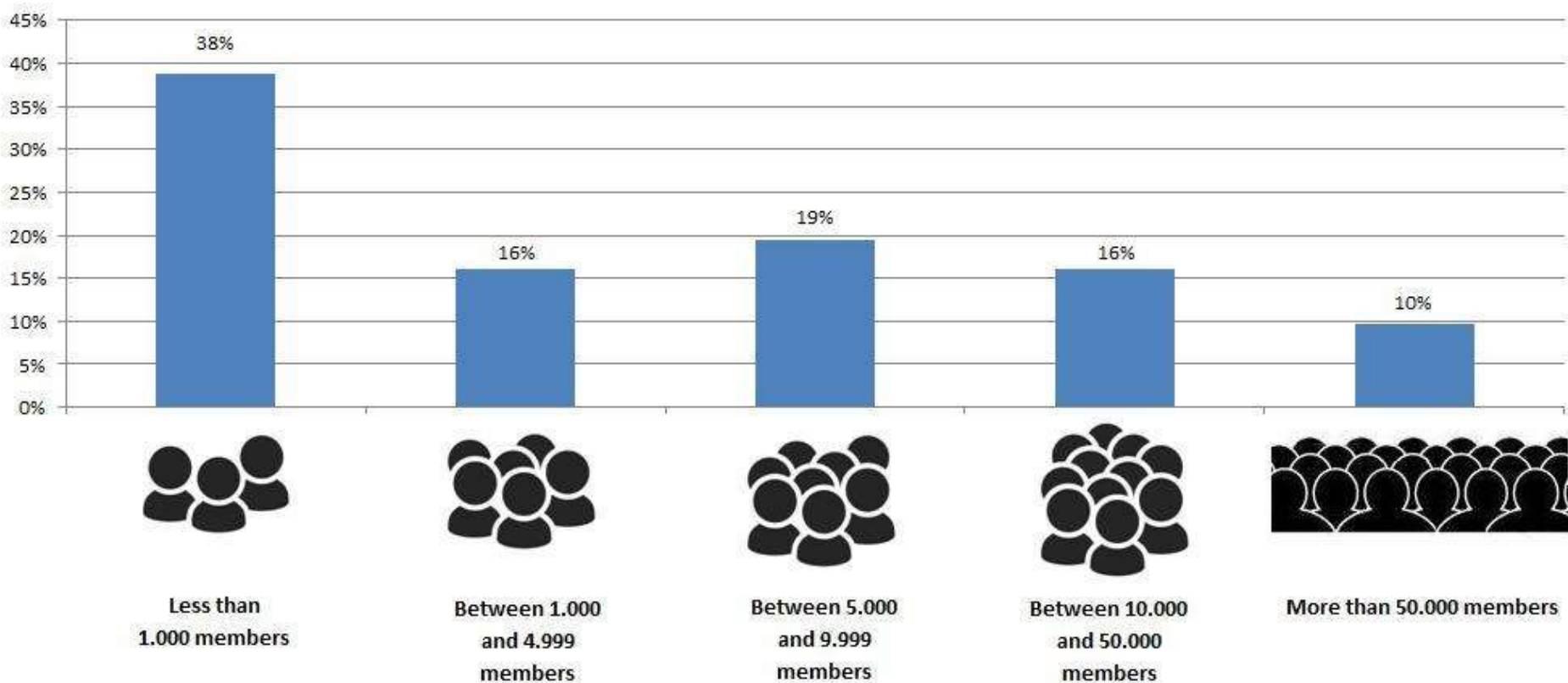
# OBJECTIVES OF THE MEETING

- Launch of the network
- Sharing experience on priority issues
- Reference for future action and expanding the network
  - Adoption of the Charter
  - Action plan and priorities
  - Campaign and Communication strategies

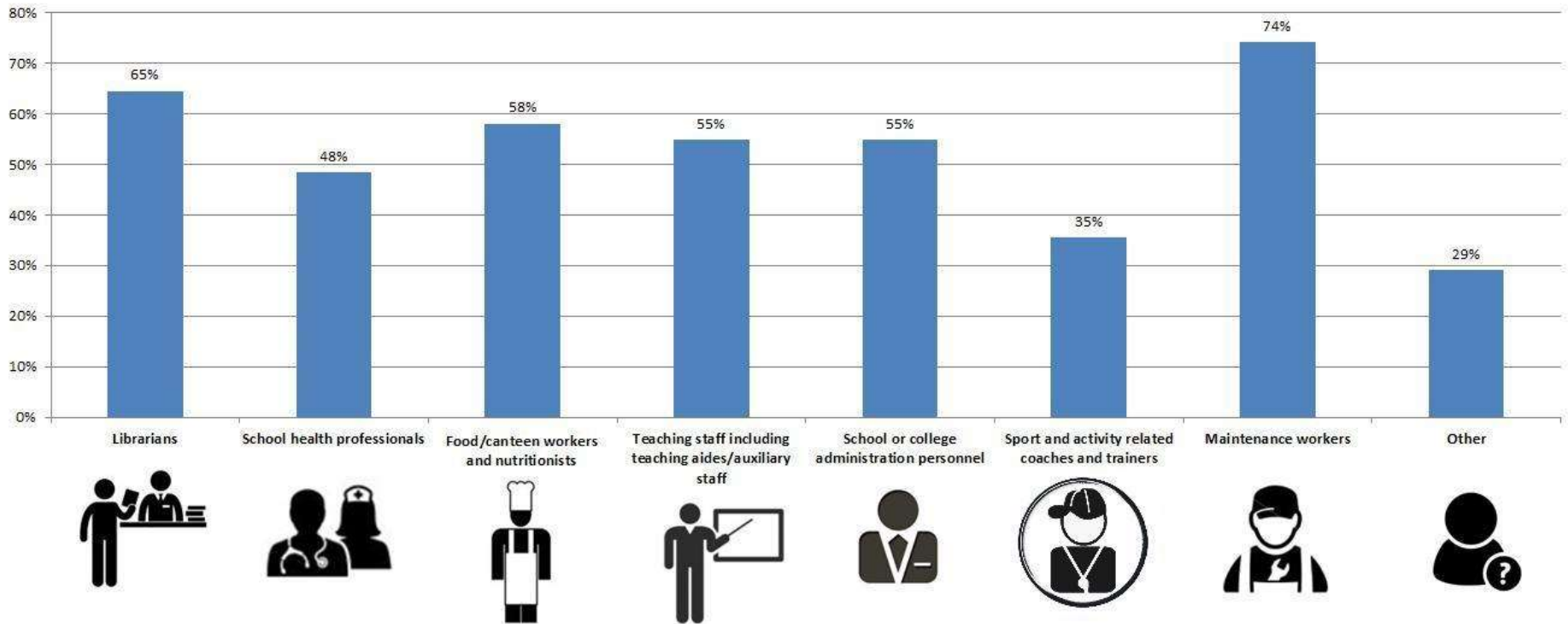
# RESULTS OF PSI SURVEY

- The survey was released in July 2014 in 7 different languages. 40 respondents from 21 different countries.
- Objective to identify PSI affiliates that organize Education Support Workers
- Inform the Founding Meeting
- Need to continue this effort, possible to expand questions + develop a survey for cultural workers

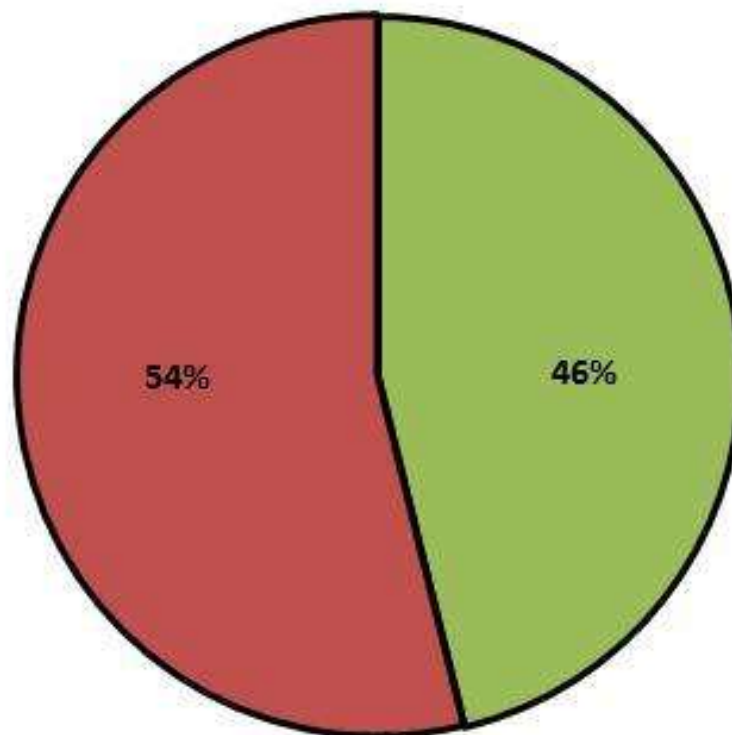
## Size of participating PSI affiliates



## Categories of workers represented



**Does your union also organize teachers  
and other professional instructors?**



☒ Yes we organize them too.

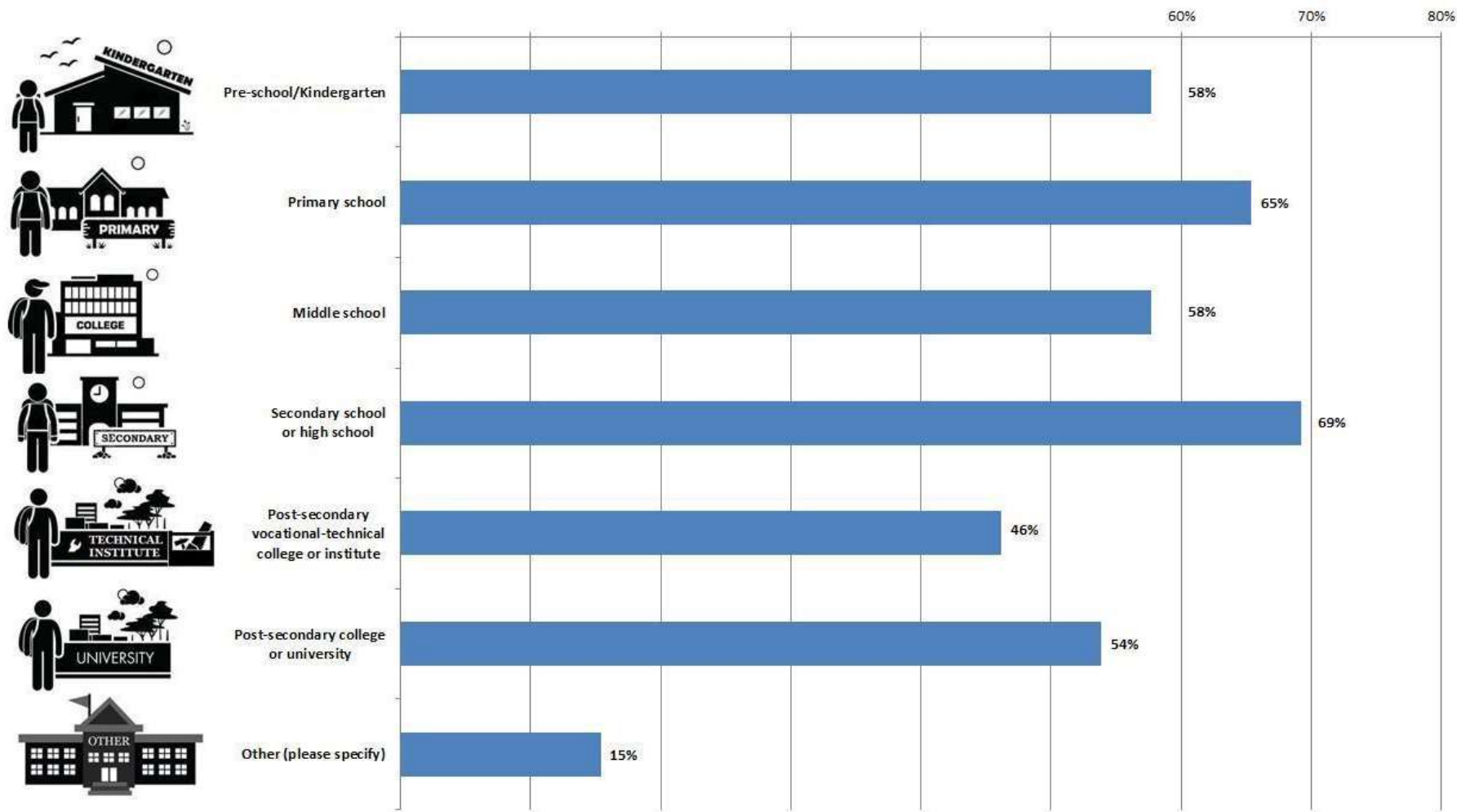
☐ No we don't organize them.



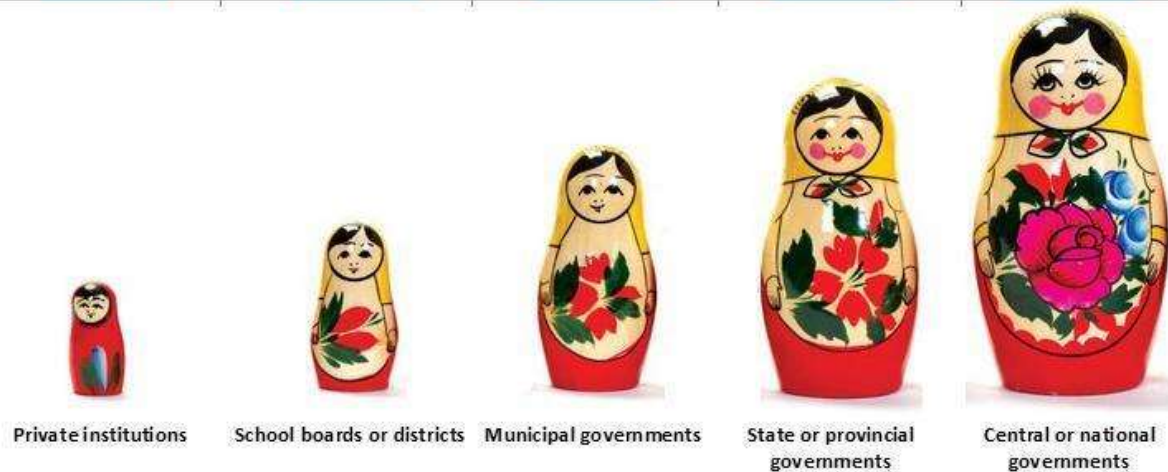
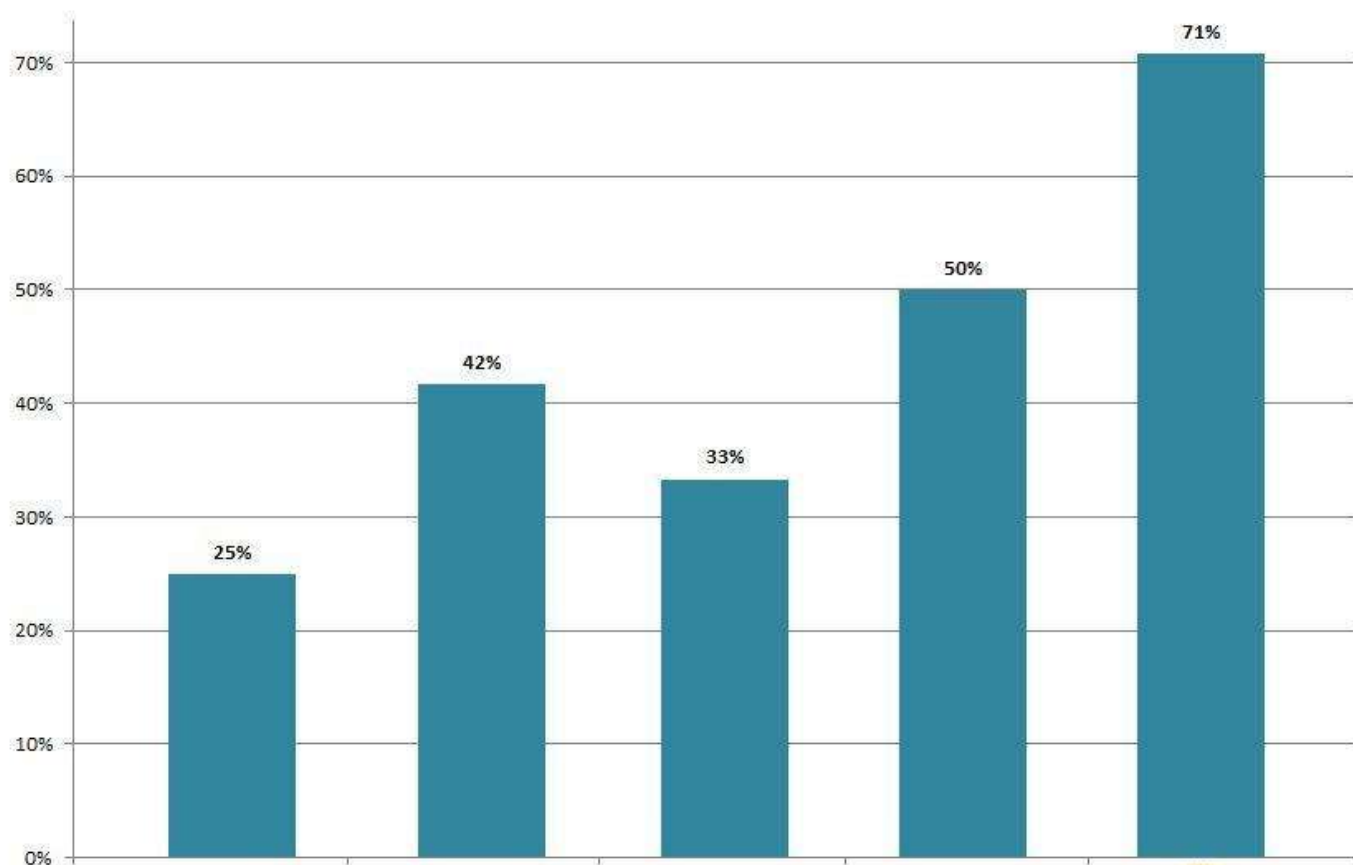
Public Services International  
Internationale des Services Publics  
Internacional de Servicios Públicos  
Internationale der Öffentlichen Dienste  
Internationell Facklig Organisation för Offentliga Tjänster  
國際公務勞連



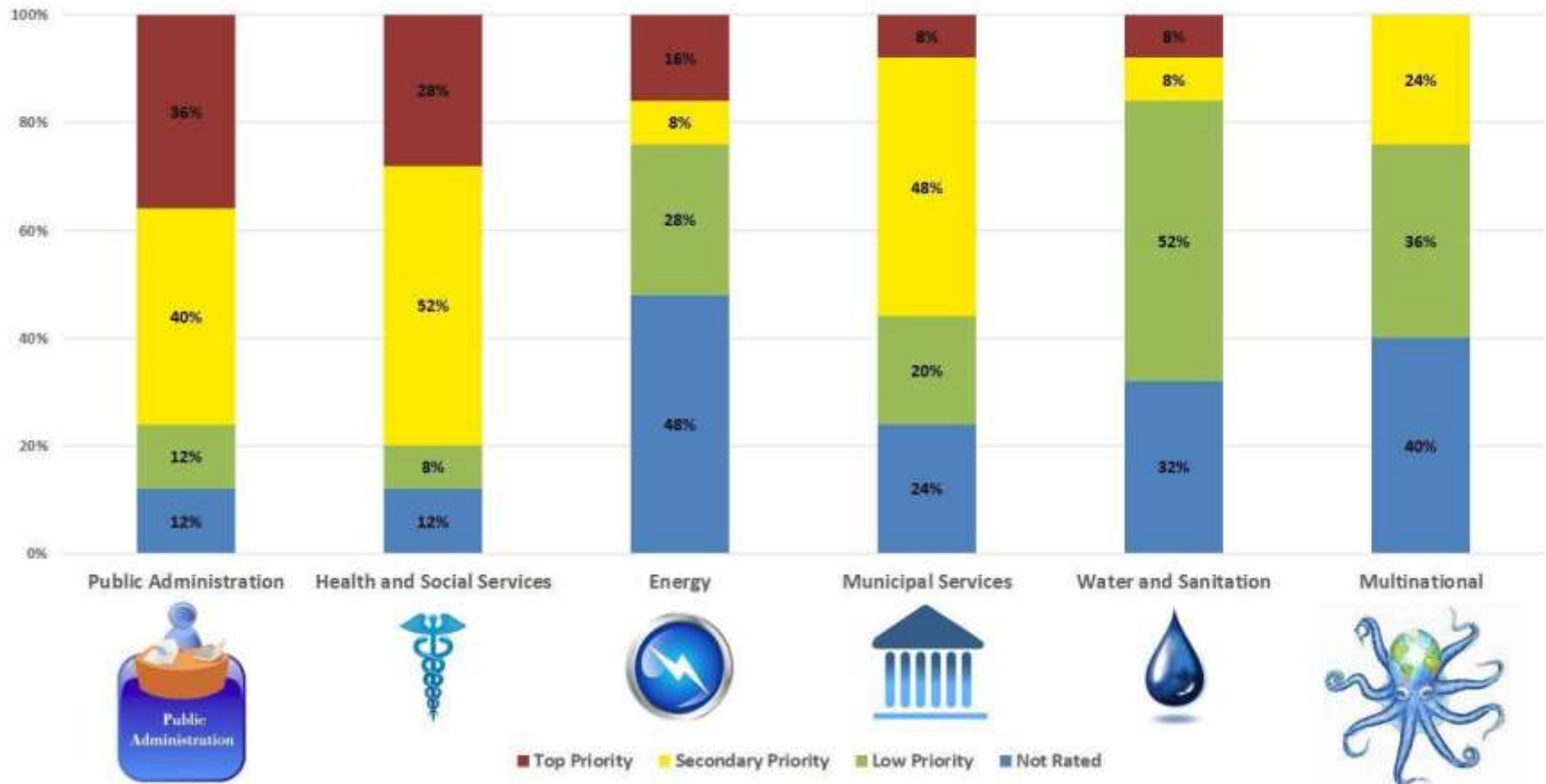
## Educational level at which union members are working



## Administrative level at which the unions represent their workers

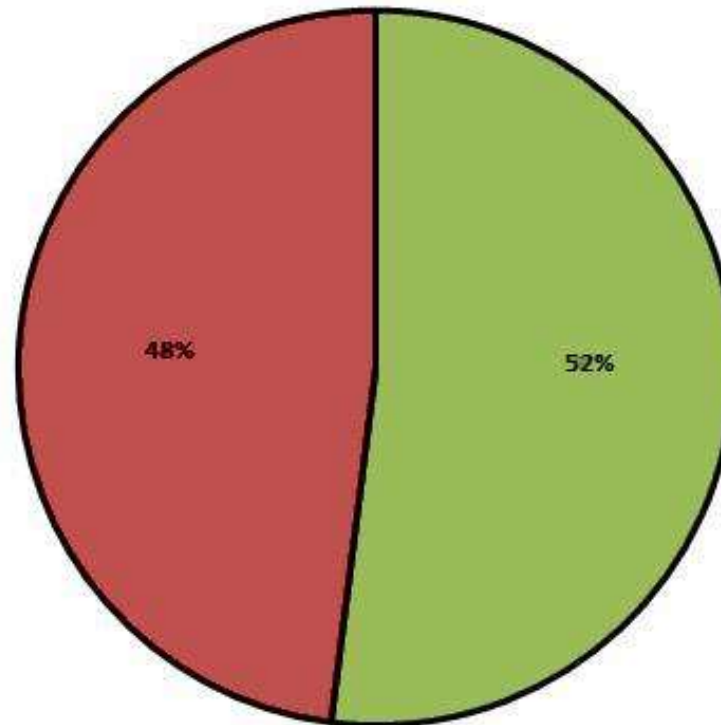


## In addition to education, what are the most important public sectors for your members?



Public administration is a top priority for 36% of the participants and a secondary priority for 40% of them.

**Do you currently have a valid collective bargaining agreement?**

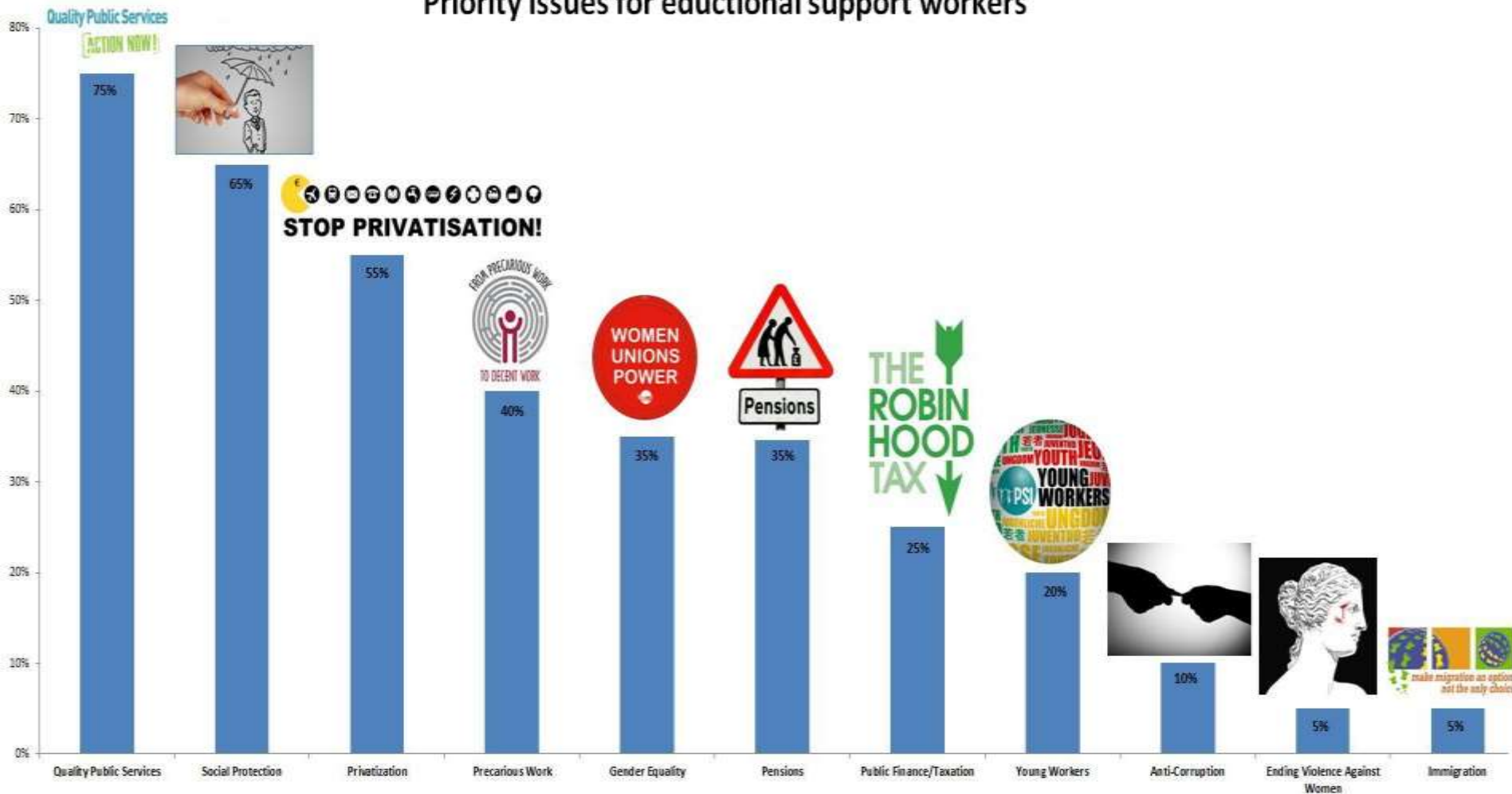


- ☒ **Yes we do have a valid collective bargaining agreement**
- ☐ **No we don't have any collective bargaining agreement**



Public Services International  
Internationale des Services Publics  
Internacional de Servicios Públicos  
Internationale der Öffentlichen Dienste  
Internationell Facklig Organisation för Offentliga Tjänster  
國際公務聯盟

## Priority issues for educational support workers



**THANK YOU  
GRACIAS  
OBRIGADA**

**[sandra.vermuyten@world-psi.org](mailto:sandra.vermuyten@world-psi.org)**  
**Equality and Rights Officer**